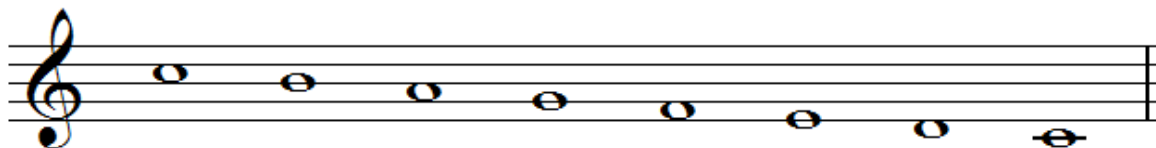



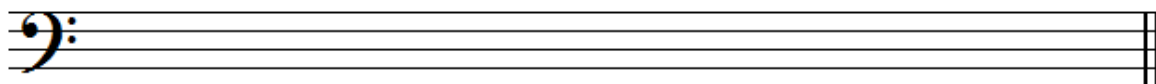
## Theory Paper 1-2D

1. Look at the scale below and then answer the questions:



- What is the key of the scale? \_\_\_\_\_
- What is the letter name of the note at the 5th degree of the scale? \_\_\_\_\_
- Place a bracket  over each semitone

2. Write out the same scale again, descending, but this time in the **bass clef**.  
Use semibreves. and mark the semitones with a bracket.



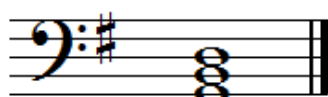
3. Name the key of each of the tonic triads below.

Write the letter names of the three notes that make up each tonic triad also.



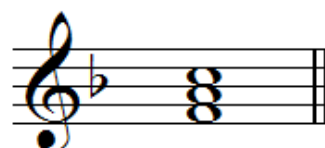
Key \_\_\_\_\_

Notes \_\_\_\_\_



Key \_\_\_\_\_

Notes \_\_\_\_\_



Key \_\_\_\_\_

Notes \_\_\_\_\_

4. Re-write the following rests so that they are in order from the longest to the shortest.

