

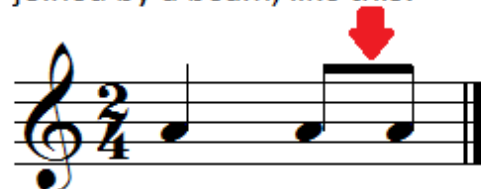
Theory Paper 1-3B

Look at this bar of music. It has one crotchet and two quavers.



- a) What letter name are the notes? _____
b) Is the time signature correct? _____

Usually, two quavers that are next to each other, making up one beat, are joined by a beam, like this:



- c) What type of clef has been used?
Treble or bass? _____

Now look at these two bars of music. In the first bar there is a crotchet and four separate semiquavers. In the second bar, the semiquavers are beamed.



- d) Which clef has been used this time? _____
e) What is the letter name of the notes (remember the clef!) ? _____
f) Four semiquavers add up to one crotchet, true or false? _____



These notes are correctly beamed. There are two crotchet beats to each bar. Notice how the quavers and semiquavers are beamed together so that they add up to beats.



Beat 1



Beat 2

You can even beam quavers and semiquavers together to group them neatly into beats.

Theory Paper 1-3B

Rewrite each of the following bars as neatly as you can with the quavers and semiquavers correctly beamed. (You don't need to copy the clef or the time signature)

